

Key Indices Update

Indices	Close	Change (%)
Nifty	22119.30	0.02 ↘
Sensex	73085.94	0.15 ↘
Midcap	47984.15	0.14 ↗
Smallcap	14660.85	0.27 ↘

Trend Strength Indicator

Nifty 50 Stocks above 200 EMA	NSE Advance / Decline
10	881/2030

Key Data

Data	Current	Previous
Dow Jones	43,192.5	43,777.5
U.S. Dollar Index	106.50	107.23
Brent Crude (USD/BBL)	71.05	73.60
US 10Y Bond Yield (%)	4.13	4.25
India 10Y Bond Yield (%)	6.77	6.77

Sectoral Data

Sector	Close	Change (%)
BANKNIFTY	48156.65	0.39 ↘
NIFTYAUTO	20559.05	0.29 ↗
NIFTYENERGY	30017.8	0.04 ↘
NIFTYFINSRV	24524.9	0.16 ↗
NIFTYFMCG	50748.8	0.12 ↗
NIFTYIT	37663	0.92 ↗
NIFTYMEDIA	1370.3	1.19 ↘
NIFTYMETAL	8322.4	1.25 ↗
NIFTYPHARMA	19880.05	0.34 ↗
NIFTYREALTY	806.4	1.07 ↗

Fundamental

Refer Page 02

Stock for Investment

Stock Name	Sector	*CMP (₹)	^TP (₹)	Upside
KOTAKBANK	Banks	1,915	2,188	14.3%

*CMP as on Mar. 03, 2025

Top News

- ✦ **Whirlpool of India Limited has engaged M/s. AZB & Partners for the anticipated sell-down by Whirlpool Corporation.** A committee will review the contractual relationship between the companies.
- ✦ **Kalpataru Projects International Ltd. has acquired 100% equity shares of Kalpataru Power DMCC, making it a direct wholly owned subsidiary.** This move aims to streamline structure and boost operational efficiency, with no change in the effective shareholding percentage.

Technical

Refer Page 03-04

- ✦ **Nifty began the week on a volatile note but ended nearly flat amid mixed cues.**
- ✦ **Sectoral performance was mixed, with realty, metal, and IT showing a rebound, while weakness in banking and financials capped gains.**
- ✦ **Banking sector performance will be crucial in the coming sessions, making it an important area to monitor for market cues.**
- ✦ **With the 21,800–22,000 support zone in focus, a cautious approach is advisable until further clarity emerges.**
- ✦ **Stock of the day - HINDALCO.**

Fundamental

Top News

01

Kalpataru Projects International Ltd. has acquired 100% equity shares of Kalpataru Power DMCC, making it a direct wholly owned subsidiary. This move aims to streamline structure and boost operational efficiency, with no change in the effective shareholding percentage.

02

Whirlpool of India Limited has engaged M/s. AZB & Partners for the anticipated sell-down by Whirlpool Corporation. A committee will review the contractual relationship between the companies.

03

Sunteck Realty Ltd. has incorporated a wholly-owned subsidiary, Eximius Buildcon Private Limited, focusing on real estate and construction. The expansion involves 10,000 equity shares at ₹10 each, totaling ₹100,000 in cash.

04

Time Technoplast Ltd. is set to launch PE pipes for gas distribution, aiming for a 30% growth in this segment. With an investment of up to Rs 8 crore, the company targets both public and private sectors, expecting benefits by Q2 FY2025-26.

05

Thyrocare Technologies Limited has increased its equity investment in Thyrocare Laboratories (Tanzania) to over 50%, making it a subsidiary. The cash consideration is USD 500,020, including a current investment of USD 25,000.

Stock for Investment

Kotak Mahindra Bank Ltd.

Stock Symbol KOTAKBANK

Sector Banks

*CMP (₹) 1,915

^Target Price (₹) 2,188

Upside 14.3%

*CMP as on Mar. 03, 2025

^Time horizon - upto 11 Months

- ✦ **Kotak Mahindra Bank** is a financial services group providing **diversified range of services** such as **banking and financial services, retail broking, treasury and corporate banking**, etc. It has **4th largest market share** in terms of **advances and deposits**.
- ✦ Kotak's loan growth will focus on secured segments like **corporate lending**, with net advances growing at a **15.5% CAGR from FY24 to FY27**. Deposit growth will be fueled by innovative products and CASA leadership, with the **CASA ratio expected to reach 47.6% by FY27**.
- ✦ Its **cautious lending and strong underwriting** ensure industry-leading asset quality with lower GNPA/NNPA ratios. Its **disciplined approach and healthy capital adequacy** will maintain this strength despite potential credit cost increases.
- ✦ Going ahead, we remain positive on Kotak Mahindra Bank as the bank has seen **healthy credit growth**, while **deposits growth** also **remained strong led** by **term deposits**. It expects **margin to remain at similar levels**.
- ✦ Financially, we expect **NII/PPOP/PAT** to **grow** at a **CAGR** of **21.3%/20.9%/18.7%** over **FY24-27E** and maintain **Buy** with a **target price** of **Rs 2,188**.

Technical

Breather expected in index. Focus on stock selection.

NIFTY
22119.30 ↘ 5.40 (0.02%)

S1	S2	R1	R2
22000	21800	22320	22470

Technical Chart : Weekly



- ✦ Nifty began the week on a volatile note but ended nearly flat amid mixed cues.
- ✦ Sectoral performance was mixed, with realty, metal, and IT showing a rebound, while weakness in banking and financials capped gains.
- ✦ Banking sector performance will be crucial in the coming sessions, making it an important area to monitor for market cues.
- ✦ With the 21,800-22,000 support zone in focus, a cautious approach is advisable until further clarity emerges.

BANKNIFTY
48114.30 ↘ 230.40 (0.48%)

S1	S2	R1	R2
47800	47500	48500	48800

Technical Chart : Weekly

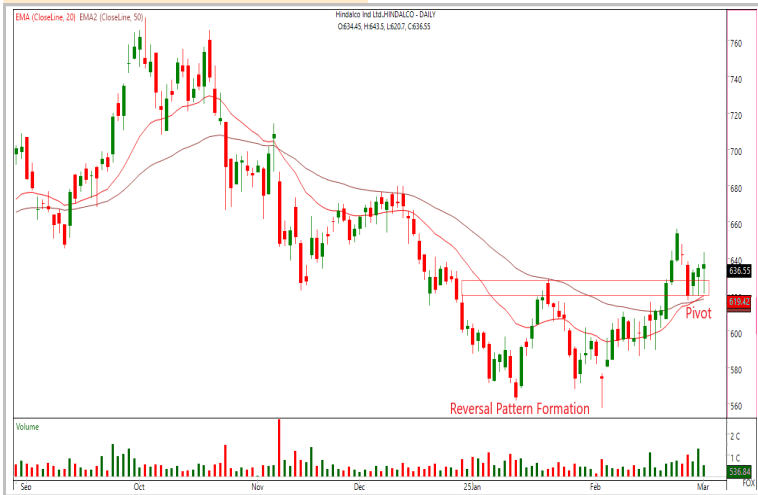


- ✦ The banking index started the week on a feeble note and lost nearly half a percent.
- ✦ Mixed trend was witnessed among the banking majors wherein Sbin, Federalbnk, Canbk saw some recovery while Hdfcbank, Axisbank experienced profit booking.
- ✦ The index slipped towards the support of its swing low around 47800 and bounced back marginally.
- ✦ Going ahead, it would be crucial to watch the levels of 47800-47500, in order to mitigate any further declines.
- ✦ Till then, adopt a cautious approach and avoid aggressive bets.

Technical

Stock of the day	Recom.	CMP (₹)	Range*	SL	Target
HINDALCO	BUY	636.55	635-637	615	678

Technical Chart : Daily



- ✦ **Hindalco** recently recorded a breakout from **double bottom pattern** indicating an **end of its corrective phase**.
- ✦ Since then, it traded **in a range** while **creating a base** near the **neckline** of its **breakout zone**.
- ✦ The stock is **holding strong** above the **confluence** of **short to medium term averages**, showcasing **strength** in current **price action**.
- ✦ Traders can **consider longs** in the **mentioned range**.

Momentum Stocks Midcap	Name	Price	Price %
	NH	1582	9.52 ↗
	WELSPUNLIV	116.88	9.32 ↗
	ANURAS	687.9	8.78 ↗
	FACT	639	7.62 ↘
	GREENPANEL	247.25	8.07 ↘

Name	Price	Price %	Range Breakout/ Breakdown
CHOLAFIN	1424.75	1.71 ↗	
GAIL	153.86	1.40 ↘	
UBL	1910.05	1.85 ↘	
INDIANB	500	2.11 ↘	
POONAWALLA	273.75	2.68 ↘	

Top 5 F&O Gainers ↗	Name	Price	Price %
	TIINDIA	2,640.10	7.23 ↗
	SUPREMEIND	3,525.55	5.90 ↗
	PRESTIGE	1,184.00	5.09 ↗
	RECLTD	377.80	4.86 ↗
	VBL	456.95	4.79 ↗

Name	Price	Price %	Top 5 F&O Losers ↘
ANGELONE	1,978.05	8.81 ↘	
BSE	4,359.45	5.92 ↘	
IREDA	147.31	5.58 ↘	
MCX	4,715.15	5.54 ↘	
KALYANKJIL	440.45	4.72 ↘	

Bullish Charts	Name	Price	Price %
	BEL	257.39	4.52 ↗
	JSWSTEEL	976.05	2.67 ↗
	LUPIN	1,952.95	2.54 ↗
	PFC	379.70	4.23 ↗
	VOLTAS	1,366.15	3.49 ↗

Name	Price	Price %	Bearish Charts
ANGELONE	1,978.05	8.81 ↘	
IGL	182.40	3.74 ↘	
JIOFIN	200.92	3.22 ↘	
RELIANCE	1,171.25	2.40 ↘	
UNIONBANK	109.07	2.70 ↘	

Research Team

Name	Email ID
<i>Ajit Mishra</i>	ajit.mishra@religare.com
<i>Abhijeet Banerjee</i>	abhijeet.banerjee@religare.com
<i>Gaurav Sharma</i>	gauravsharma2@religare.com
<i>Ashwani Harit</i>	ashwani.harit@religare.com
<i>Divya Parmar</i>	divya.parmar@religare.com
<i>Vinay Kalani</i>	vinay.kalani1@religare.com
<i>Rajan Gupta</i>	rajan.gupta1@religare.com

Disclaimer

Before you use this research report, please ensure to go through the disclosure inter-alia as required under Securities and Exchange Board of India (Research Analysts) Regulations, 2014 and Research Disclaimer at the following link: <https://www.religareonline.com/disclaimer>

Specific analyst(s) specific disclosure(s) inter-alia as required under Securities and Exchange Board of India (Research Analysts) Regulations, 2014 is/ are as under:

Statements on ownership and material conflicts of interest, compensation- Research Analyst (RA) [Please note that only in case of multiple RAs, if in the event answers differ inter-se between the RAs, then RA specific answer with respect to questions under F(a) to F(j) below, are given separately]:

S. No.	Statement	Answer	
		Yes	No
	I/we or any of my/our relative has any financial interest in the subject company? [If answer is yes, nature of interest is given below this table]		No
	I/we or any of my/our relatives, have actual/beneficial ownership of one percent. or more securities of the subject company, at the end of the month immediately preceding the date of publication of the research report or date of the public appearance?		No
	I/we or any of my/our relative, has any other material conflict of interest at the time of publication of the research report or at the time of public appearance?		No
	I/we have received any compensation from the subject company in the past twelve months?		No
	I/we have managed or co-managed public offering of securities for the subject company in the past twelve months?		No
	I/we have received any compensation for brokerage services from the subject company in the past twelve months?		No
	I/we have received any compensation for products or services other than brokerage services from the subject company in the past twelve months?		No
	I/we have received any compensation or other benefits from the subject company or third party in connection with the research report?		No
	I/we have served as an officer, director or employee of the subject company?		No
	I/we have been engaged in market making activity for the subject company?		No

Nature of Interest if answer to F(a) above is Yes: Name(s) with Signature(s) of RA(s).

[Please note that only in case of multiple RAs and if the answers differ inter-se between the RAs, then RA specific answer with respect to questions under F(a) to F(j) above, are given below]

SS. No.	Name(s) of RA.	Signatures of RA	Serial Question of question which the signing RA needs to make a separate declaration / answer	Yes	No

Copyright in this document vests exclusively with RBL. This information should not be reproduced or redistributed or passed on directly or indirectly in any form to any other person or published, copied, in whole or in part, for any purpose, without prior written permission from RBL. We do not guarantee the integrity of any emails or attached files and are not responsible for any changes made to them by any other person.

No representations are being made about the performance or activities unless accompanied by data regarding performance, disclosures of all the risk factors, etc. and disclaimer that "Such representations are not indicative of future results